

LEGEND:

- S — EXISTING CONTOUR
- PL — EXISTING PROPERTY LINE
- FP — FLOODPLAIN (PER FEMA)
- FP — FLOODPLAIN (PER ELEVATION)
- PROPOSED BUILDING

GENERAL NOTES:

- DRAWING IS BASED ON FIELD SURVEY COMPLETED BY THE SIGMA GROUP ON FEBRUARY 17, 2025.
- DATUM FOR THE PROJECT SURVEY IS NAD83. BENCHMARK FOR THE PROJECT SURVEY IS THE SOUTHEAST CORNER OF SECTION 4-3-21, CONCRETE MONUMENT ELEV=697.97.

SIGMA GROUP
 Single Source. Sound Solutions.
 www.thesigmagroup.com
 1300 West Canal Street
 Milwaukee, WI 53233
 Phone: 414-643-4200
 Fax: 414-643-4210

GRAPHIC SCALE
 0 200 400

**RIV/CRETE READYMIX
 2221 RAYMOND AVE
 YORKVILLE, WI
 OVERALL SITE PLAN**

**PRELIMINARY
 NOT FOR
 CONSTRUCTION**

ISSUANCE	DATE
NO. REVISION	DATE

PROJECT NO:	23773
DESIGN DATE:	—
PLOT DATE:	2025.02.18
DRAWN BY:	—
CHECKED BY:	CTC
APPROVED BY:	CTC
SHEET NO:	

**RECEIVED
 FEB 19 2025
 RACINE COUNTY**

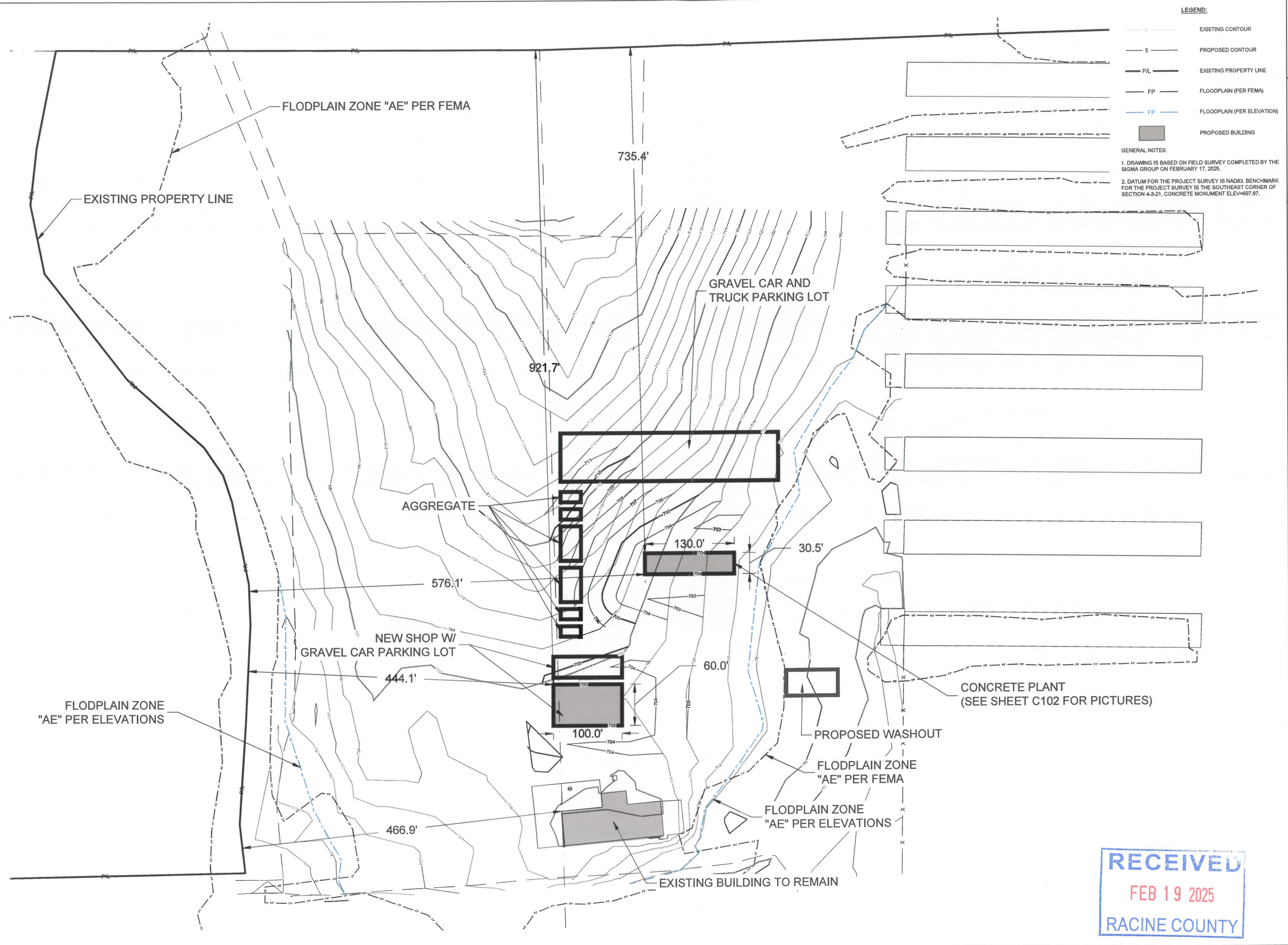
C100

2025.02.18

MGARNER

C101

23773

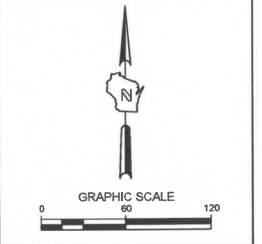


- LEGEND:**
- 5 — EXISTING CONTOUR
 - 5 — PROPOSED CONTOUR
 - P/L — EXISTING PROPERTY LINE
 - FP — FLOODPLAIN (PER FEMA)
 - FP — FLOODPLAIN (PER ELEVATION)
 - PROPOSED BUILDING

GENERAL NOTES:

1. DRAWING IS BASED ON FIELD SURVEY COMPLETED BY THE SIGMA GROUP ON FEBRUARY 17, 2025.
2. DATUM FOR THE PROJECT SURVEY IS NAD83. BENCHMARK FOR THE PROJECT SURVEY IS THE SOUTHEAST CORNER OF SECTION 4-3-21, CONCRETE MONUMENT ELEV=697.97.

THE SIGMA GROUP
 Single Source. Sound Solutions.
 www.thesigmagroup.com
 1300 West Canal Street
 Milwaukee, WI 53233
 Phone: 414-643-4200
 Fax: 414-643-4210



RIV/CRETE READYMIX
 2221 RAYMOND AVE
 YORKVILLE, WI
 DETAILED SITE PLAN

**PRELIMINARY
NOT FOR
CONSTRUCTION**

ISSUANCE	DATE
NO. REVISION	DATE

PROJECT NO:	23773
DESIGN DATE:	—
PLOT DATE:	2025.02.18
DRAWN BY:	MRC
CHECKED BY:	CTC
APPROVED BY:	CTC
SHEET NO:	C101

RECEIVED
 FEB 19 2025
 RACINE COUNTY

