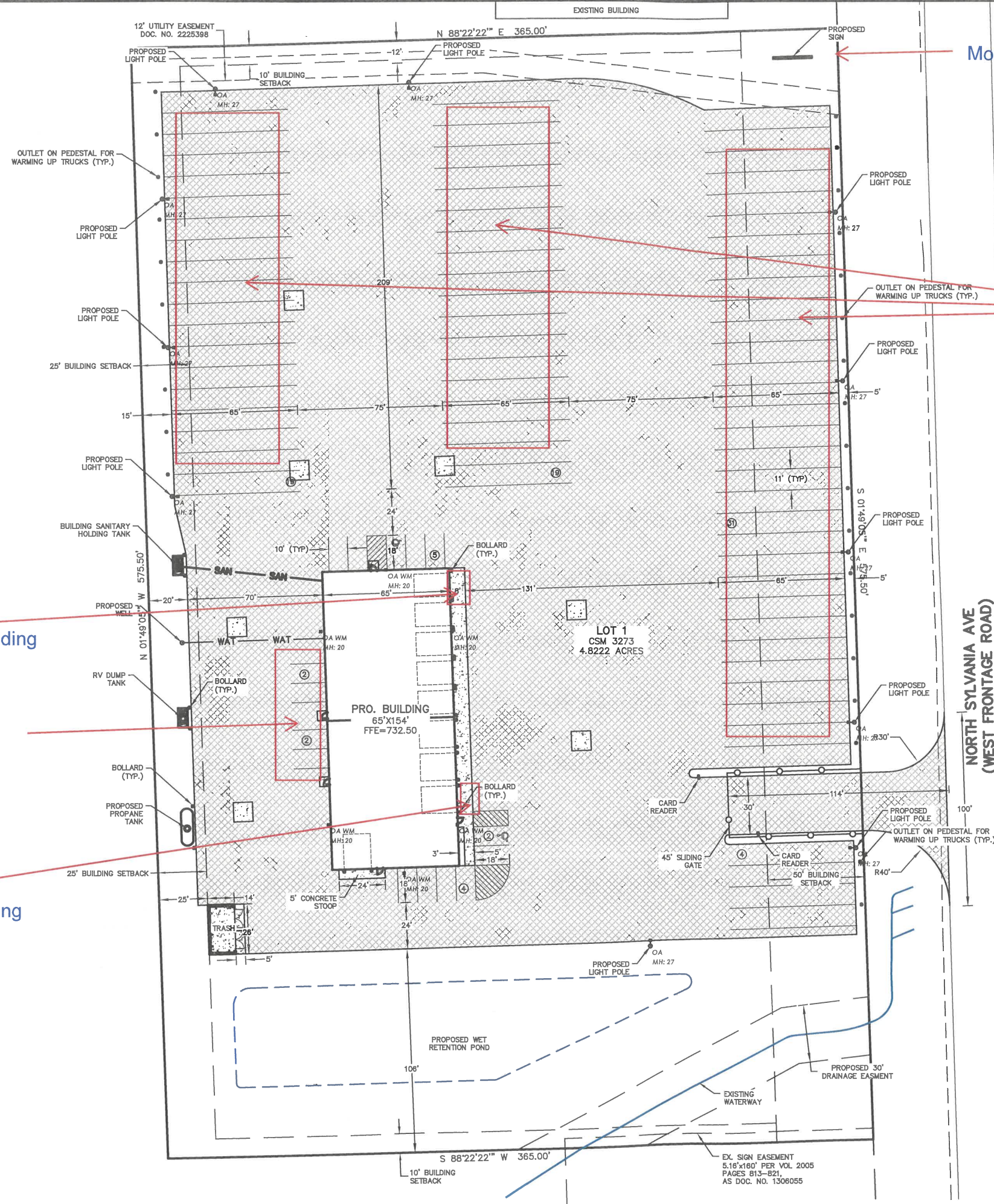


EXHIBIT A



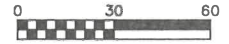
Sales Sign/flashed against building

Employee Parking

Parts & Service Sign Flushed against building

Monument Signage

Truck Parking Work in Progress Display



I-94

SITE INFORMATION BLOCK

Site Address LOT 1 - CSM 3273 - NORTH SYLVANIA
 Site acreage (total) 4.822 ACRES
 Existing Impervious Area 0.34 ACRES
 Area of Disturbance 4.6 ACRES

Current Zoning B-3
 Setbacks Building/Pavement
 Front 50'
 Side 10'
 Rear 25'

Number of Parking stalls required: 15
 Number of Parking stalls required:

	STALLS
Warehouse	13
Accessible	2
Total car parking	15
Tractor trailer	73

Surface Coverage Total:

Impervious	150,931 SQ FT (3.46 Acres)
Pervious	59,125 SQ FT (1.36 Acres)
Total	210,056 SQ FT (4.82 Acres)
Impervious Percentage	71.9%

SITE PLAN NOTES:

1. ALL STRIPING AND SIGNAGE SHALL COMPLY WITH THE WISCONSIN MANUAL ON UNIFORM TRAFFIC CONTROL DEVICES, LATEST EDITION.

PAVING LEGEND

	ASPHALT 8" CRUSHED AGGREGATE BASE COURSE 3" ASPHALTIC BINDER 3 LT 58-28 S 2" ASPHALTIC SURFACE 4 LT 58-28 S
	CONCRETE 8" CRUSHED AGGREGATE BASE COURSE 7" CONCRETE

RECEIVED
 APR 18 2024
 RACINE COUNTY

M&M EXPRESS—VILLAGE OF YORKVILLE
 PROPOSED SITE PLAN
 DATED: AUGUST 2, 2021

C-103

QUAM ENGINEERING, LLC
 Residential and Commercial Site Design Consultants

122 Wisconsin Street, West Bend, Wisconsin 53095
 Phone (262) 346-7800; www.quamengineering.com