

I-94 North-South (South Segment) Project Update

The Wisconsin Department of Transportation (WisDOT) is scheduled to begin reconstruction of the northbound lanes of I-94 North-South (South Segment) from WIS 142 north to WIS 20 starting as early as Sunday, June 24. Four lanes of traffic in each direction are scheduled to open late fall 2019.

Overview:

- Expand freeway to four lanes in each direction with safety and operational improvements
- Rebuild all existing bridges over local roads
- 6.5 miles of freeway reconstruction
- Rebuild County E, County KR, and WIS 11 interchanges

The following closures are scheduled from mid-June through late fall 2018:

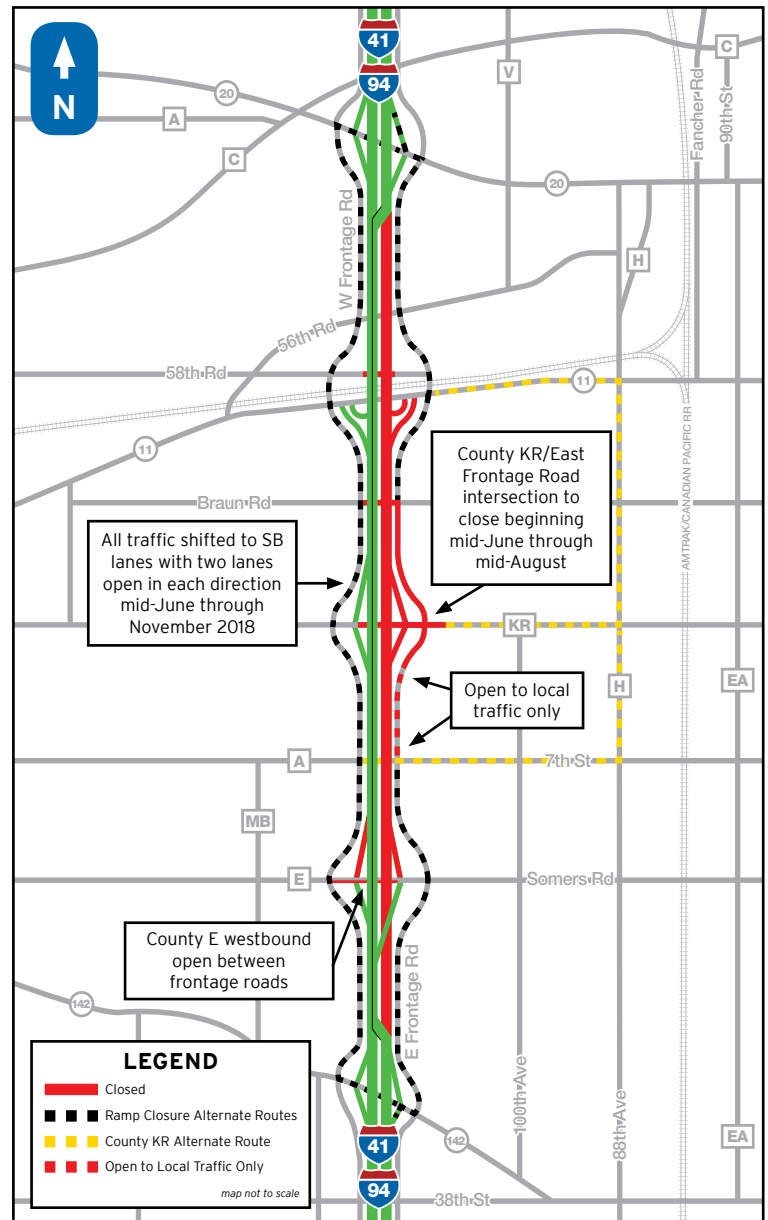
- County E entrance ramp to I-94 West (NB)
- I-94 East (SB) exit ramp to County E
- County E eastbound under I-94
- County KR entrance ramp to I-94 West (NB)
- I-94 West (NB) exit ramp to County KR
- County KR under I-94
- Braun Road under I-94
- WIS 11 entrance ramp to I-94 West (NB)
- I-94 West (NB) exit ramp to WIS 11
- 58th Road under I-94
- Intermittent full closures of both east and west frontage roads will occur between County E and County KR during the summer for utility work. Stay tuned for more details.

Ramp Closure Alternate Route: Motorists are encouraged to use WIS 142, WIS 20, and the frontage roads to get around the ramp and crossroad closures.

All traffic will be shifted to the southbound lanes with two lanes open in each direction mid-June through November 2018.

To learn more about the upcoming construction, closures, alternate routes and temporary business signing, or to receive project updates, please contact:

Cynthia De Vor
Construction Public Involvement Lead
Email: Cynthia@devorpr.com
Phone: 262.510.8901



The project team thanks you for your patience and cooperation throughout this project!



Find us online at:
projects.511wi.gov



Find us on Facebook at:
Wisconsin Plan 94



Find us on Twitter at:
@WisconsinPlan94



Plan Ahead, Drive Safely, Move Forward